



## FULL ZIP FRENCH TERRY SWEATSHIRT

Felpa da uomo con cerniera invisibile completa e collo alto con tasche laterali.

Dettagli:

- Polsini e fondo del capo in costina 2x1 con elasthan.
- Felpa non garzata.
- Zip nascosta.
- Tasche laterali.
- 235/240 g/m<sup>2</sup> approx.
- 60% Cotone / 40% Poliestere.

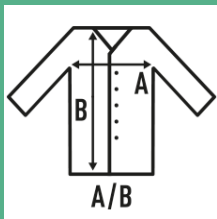
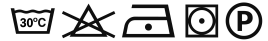
60% Cotone / 40% Poliestere. Peso: 235/240 g/m<sup>2</sup> approx.



Box/Box 25



Pack/Pack 25



### SIZE/Size

EU	S	M	L	XL	XXL
Width	54 cm	56 cm	58 cm	60 cm	62 cm
	69 cm	72 cm	74 cm	76 cm	78 cm



White  
(WH)



Black  
(BK)



Red  
(RD)



Navy  
(NY)



Royal Blue  
(RB)



Grey Melange  
(GM)